

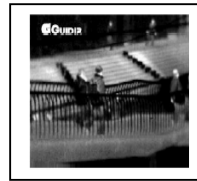


www.csspakistan.com

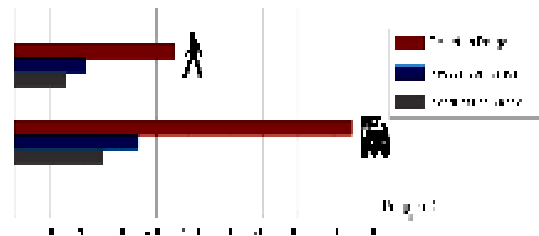
Capital Services System

Thermal Security Camera

- Light-weight & High Performance
- Total Water Proof
- Rugged, compact & easy to operate
- Analog signal output
- Electronic zooming
- Optional Remote controlled keyboard
- Optional Lenses



Affordable and compact, Thermal Security Camera IR 210 is ideal for integration into various CCTV security systems for active surveillance against intrusion unauthorized approach and other potential safety hazards. With night-piercing capability, IR 210 makes it unnecessary to utilize image enhancers or extra lighting for detecting any intruders. Recognition, detection and identification ranges are dependent on the choice of available lenses 19mm, 40mm, 50mm and 75mm.



Technical Specifications

| Imaging Performance | |
|--------------------------------------|--|
| Detector: | Uncooled FPA microbolometer (384 X 288 pixels 35 μ m) |
| Thermal Sensitivity: | 0.8 $^{\circ}$ C @ 30 $^{\circ}$ C |
| Start-up Time: | < 30 Seconds |
| Pitch: | 35 μ m X 35 μ m |
| Spectral Range: | 8 ~ 14 μ m |
| Field of View: | 32.8 $^{\circ}$ X 24.9 $^{\circ}$ |
| Veh Detec/Recog with 19mm lens | 800m/400m |
| Human Detec/Recog with 19mm lens | 500m/250m |
| Veh Detec/Recog with 75mm (Optional) | 1600m/900m (Optional) |
| Human Detec/Recog 75mm (Optional) | 1200m/700m (Optional) |
| Spatial Resolution (IFOV): | 1.8 mrad |
| Image Presentation | |
| Video Output: | PAL/NTSC |
| Image Frequency: | 50Hz PAL/ 60Hz NTSC |
| Display: | White/Black (pseudo color optional) |
| Contrast/Brightness: | Manual/Automatic |
| Electronic Zoom: | 2X, 4X |
| | Power System |
| Voltage: | DC 9V |
| Power Dissipation: | 3 watts |
| Physical Characteristics | |
| Size: | 120mm X 60mm X 60mm (Camera body) |
| Weight: | 220 g |
| Interface | |
| Remote Control: | RS 232 serial communication |
| Environmental | |
| Operating Temperature: | -20 $^{\circ}$ C ~ +50 $^{\circ}$ C (-40 $^{\circ}$ C ~ +60 $^{\circ}$ C Optional) |
| Storage Temperature Range: | -40 $^{\circ}$ C ~ +60 $^{\circ}$ C |

Standard Configuration
 IR 210 Camera
 19mm lens
 Video Cable

User Manual
 AC Adapter
 RS 232 Cable
 Carrying Case

info@csspakistan.com

Head Office

No.27, 1st Floor, AL-Baber Centre
 Markaz F-8, Islamabad, Pakistan
 Tel: +92 51 2855627, 2856534
 Fax: +92 51 2855629

Lahore Office

Mota Singh, 1 Km Off Bedian Rd
 Near Elite Force Training Centre
 Lahore Cantt. Pakistan
 Tel: +92 42 5031919

China Office

A 616 , Yingban Commercial Building
 129 Nan Xiao Jie, Shijia Zhuang
 Hebei, P.R. China
 Tel: + 86 13619985772